

Update Guide

Code readers from Foxwell are able to be updated to keep you stay current with the latest development of diagnosis. Also, it allows you to upload recorded test results to your PC or laptop for analysis and printing (applicable to NT300 only).

Updating the Code Reader

The update of code readers consists of two parts: program upgrade and DTC upgrade. Normally you do not need to upgrade the DTC library very frequently.

√ To update your code reader, you need following tools:

- The code reader
- Update tool FoxLink
- PC or laptop with USB Ports and internet explorer
- USB cable


√ To be able to use update tool, PC or laptop must meet the following minimum requirements:

- Operation System: Win98/NT, Win ME, Win2000, Win XP, VISTA and Windows 7.
- CPU: Intel PIII or better
- RAM: 64MB or better
- Hard Disk Space: 30MB or better
- Display: 800*600 pixel, 16 byte true color display or better
- Internet Explorer 4.0 or newer


IMPORTANT Do not disconnect the code reader from computer, or power off the computer during the process of updating.

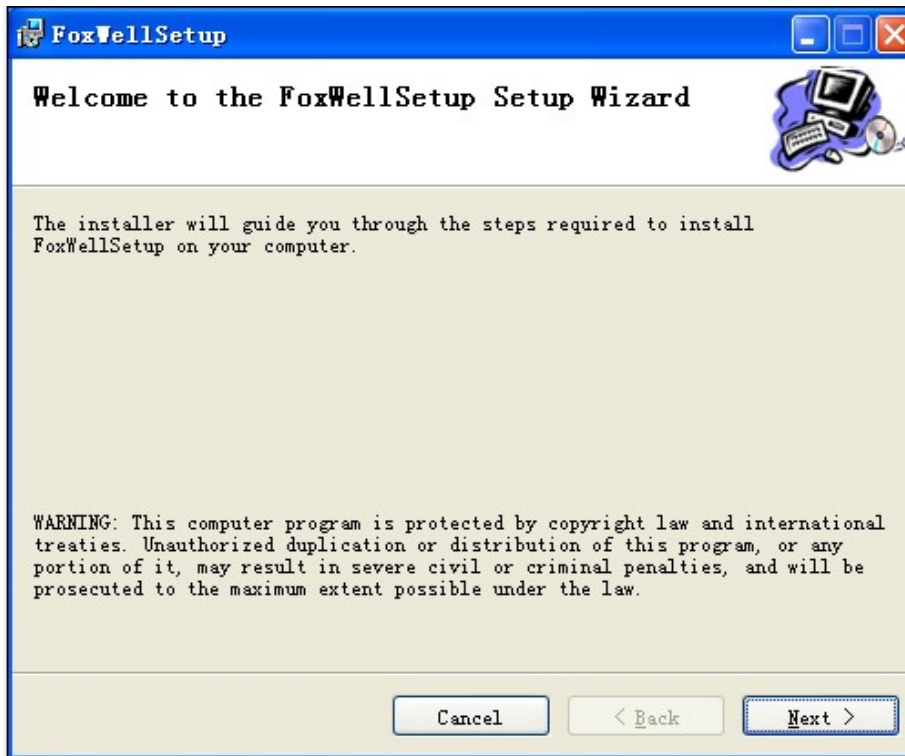
To update program:



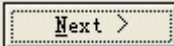
1. Visit our website www.foxwelltech.com and select  to download the update tool FoxLink and update files. Save the applications and files in your computer disk.

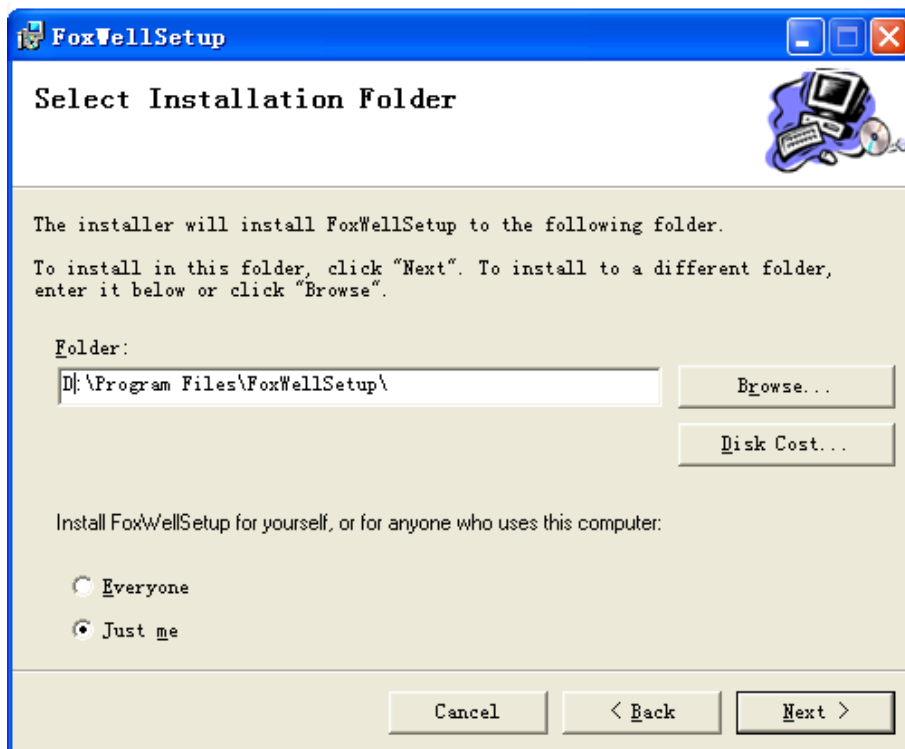
2. Unzip the update tool file.

3. Double click the  icon to start the installation.

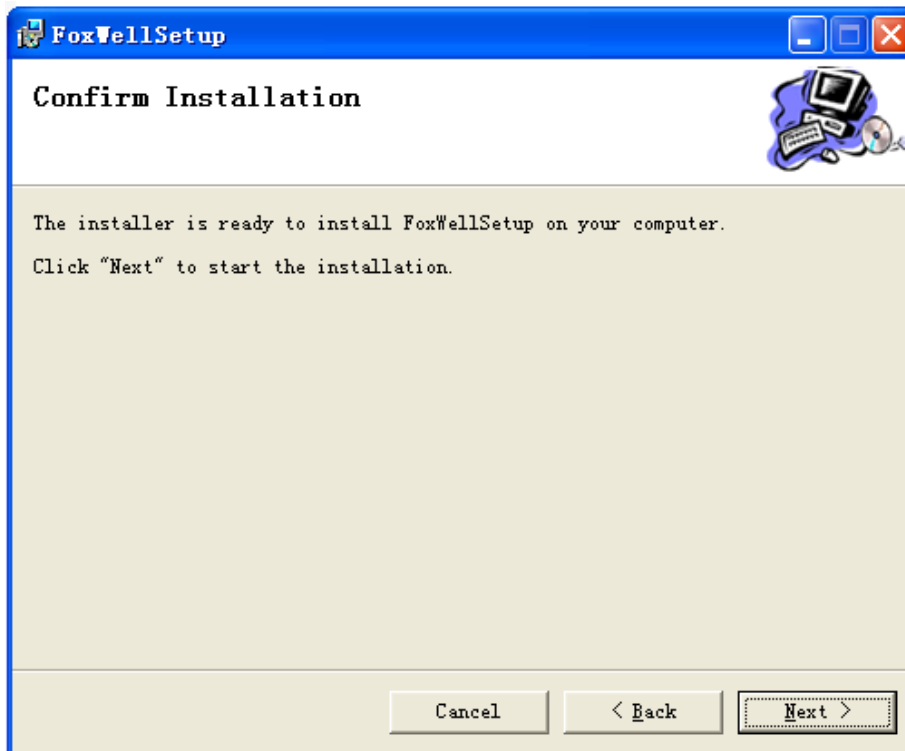


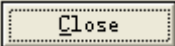
4. Click  to continue.

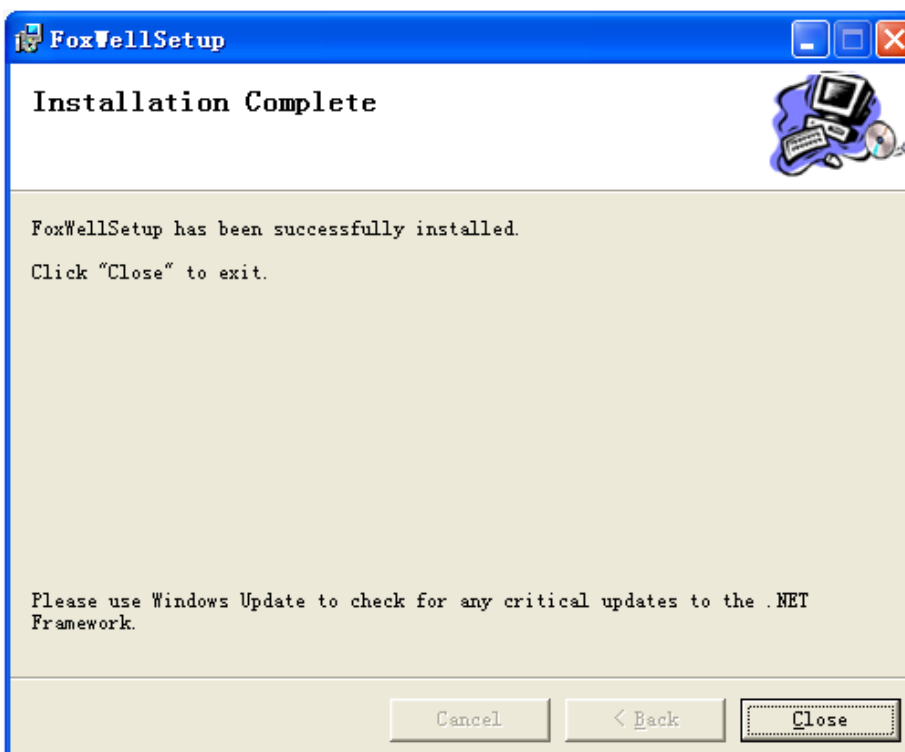
5. Select an installation folder and click  to continue.



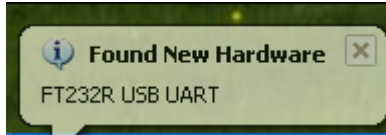
6. Click  to continue.



7. Wait a few seconds till the installation is completed and click  to exit.

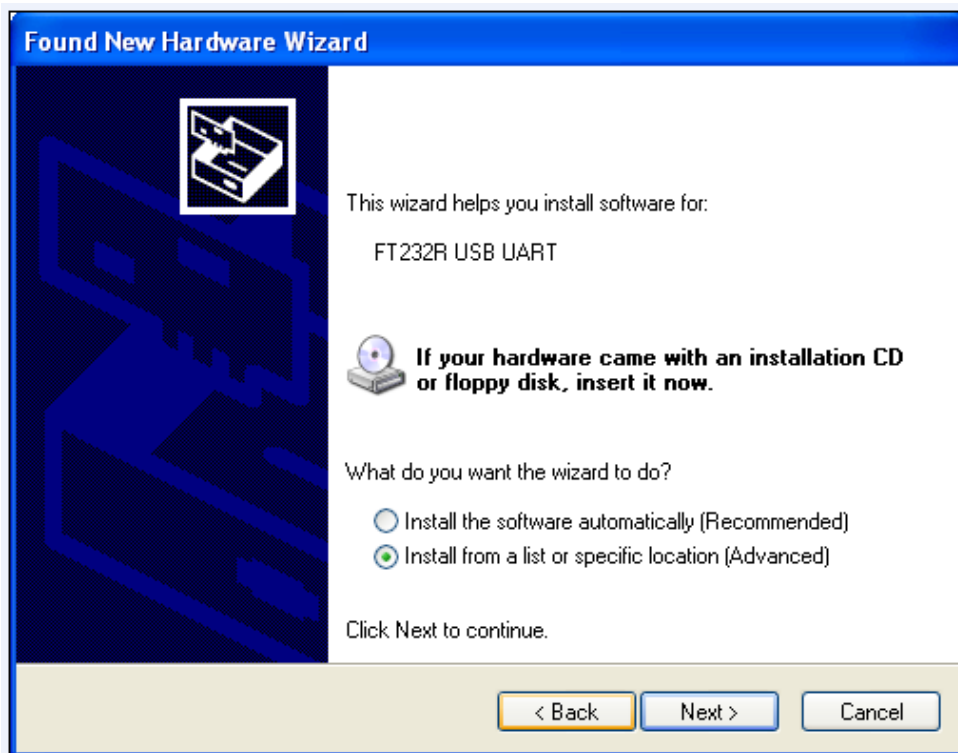


8. Connect the code reader to your computer with the USB cable supplied, and your computer will detect the device automatically. Follow steps below to install FT232 USB UART.

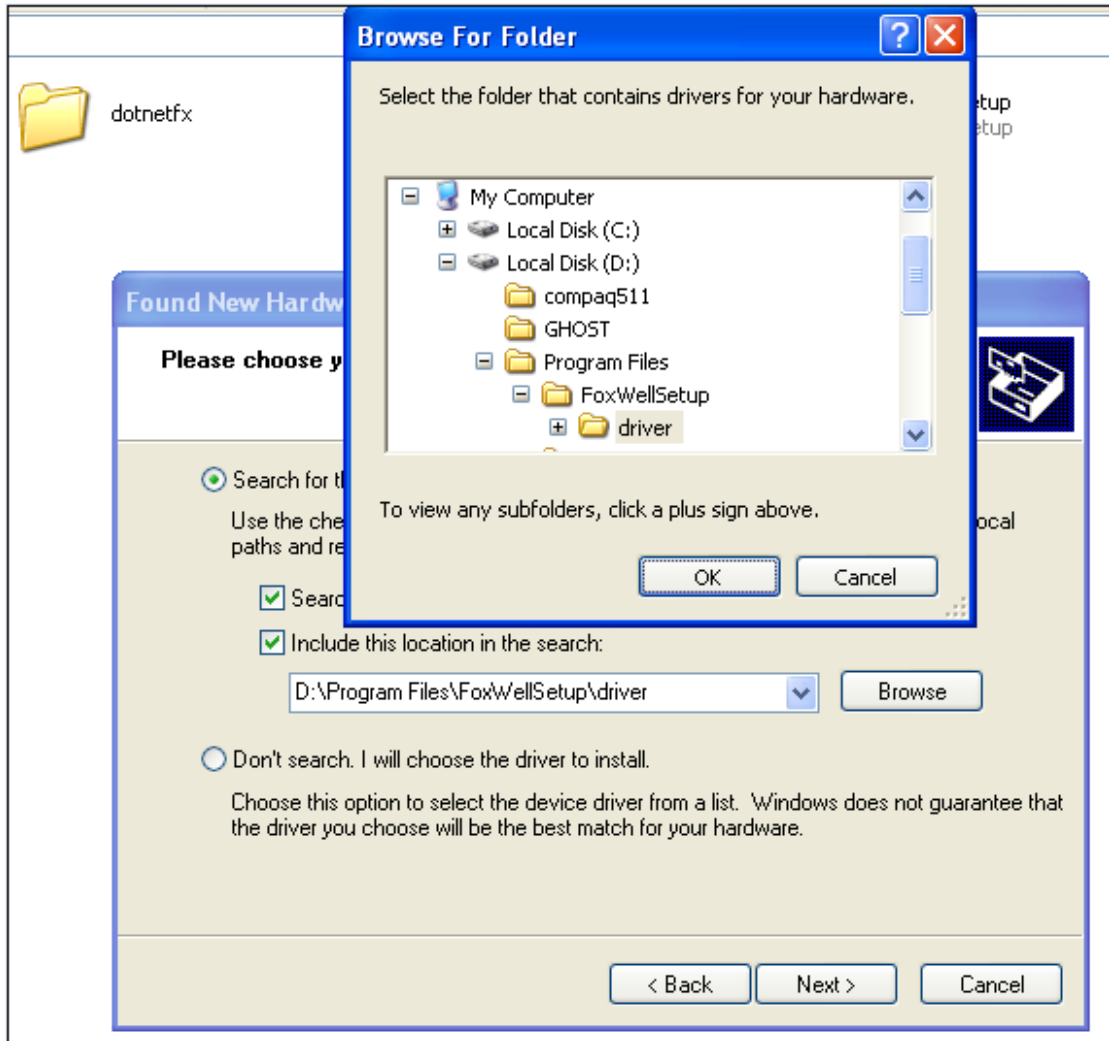


9. Observe the prompts on your computer screen, select Yes, this time only and then click to continue.

10. Select Install from a list or specific location (Advanced) and click to continue.



11. Select the folder that contains driver for the device, click to confirm and then click to continue.



12. Wait a few seconds till the hardware is installed.



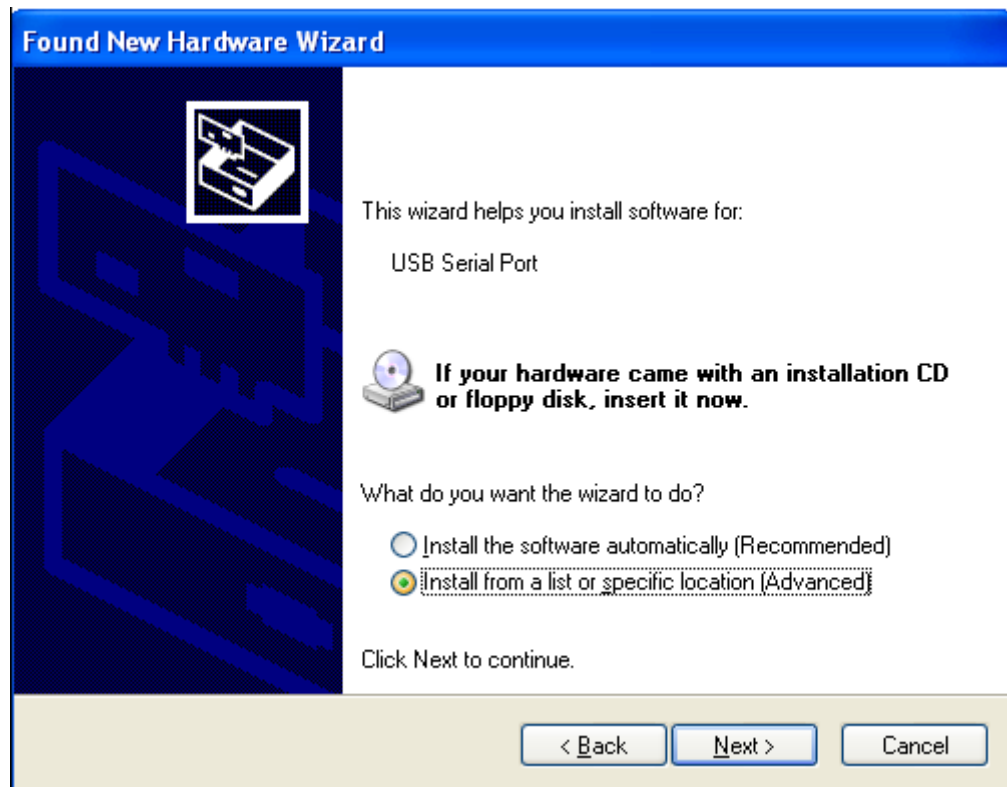
13. When FT232R USB UART is installed, you will be prompted to install USB Serial Port.



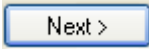
14. Select Yes, this time only and then click to continue.

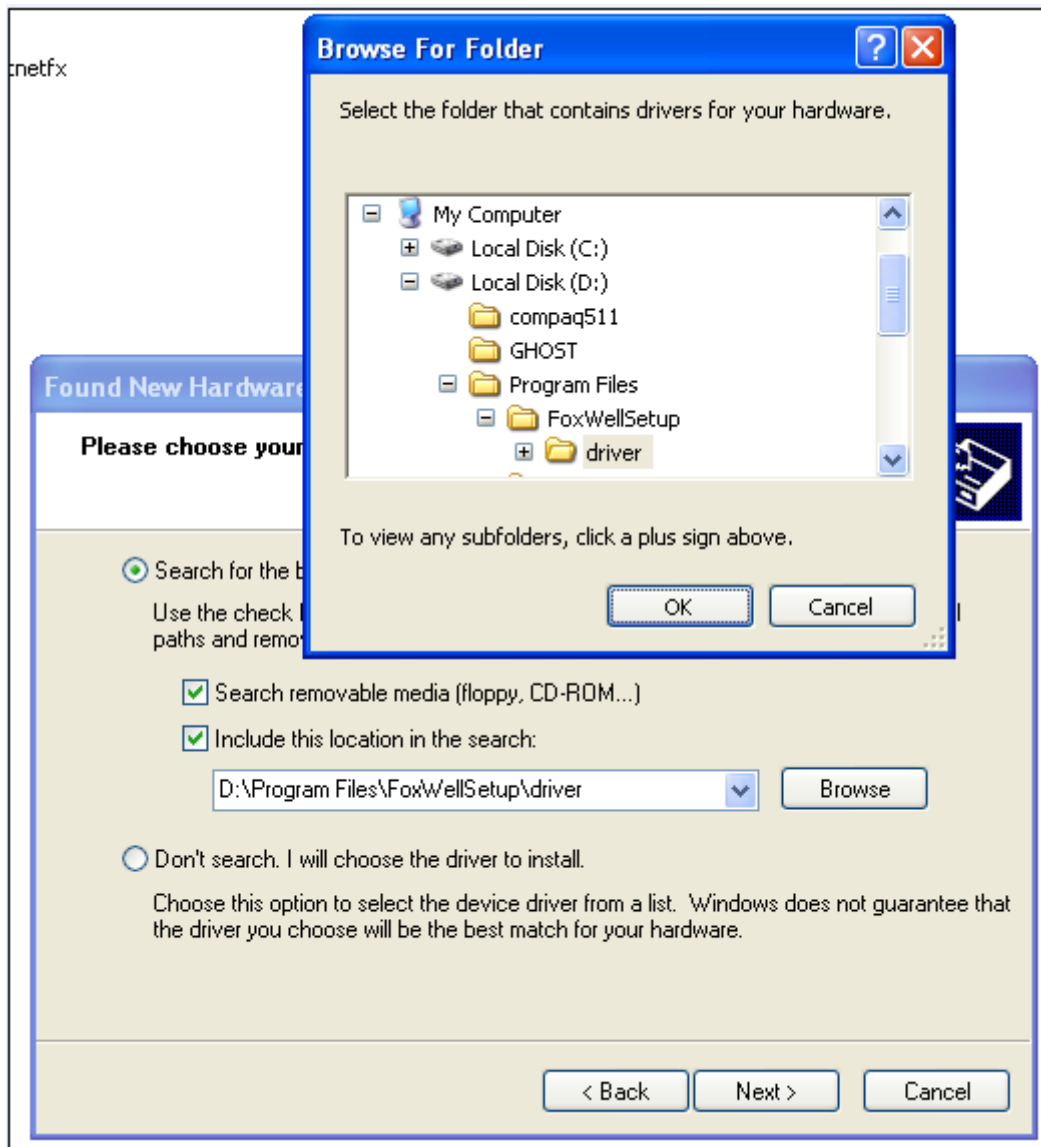


15. Select Install from a list or specific location (Advanced) and click to continue.

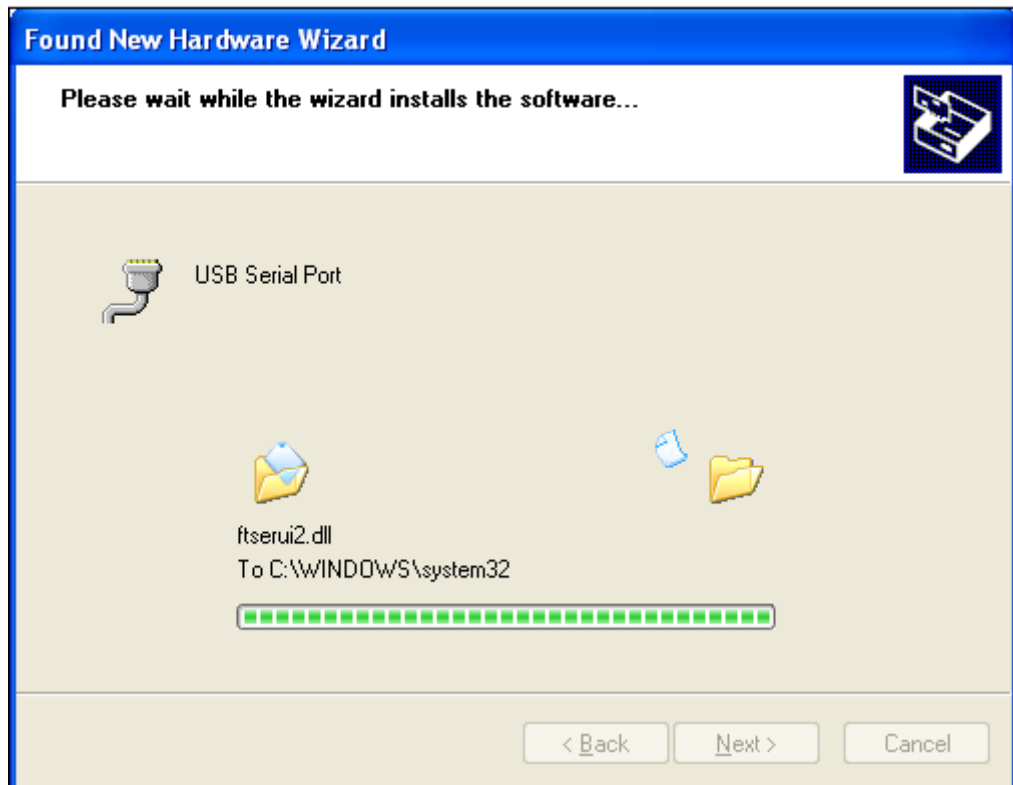


16. Select the folder that contains driver for the device, click to confirm

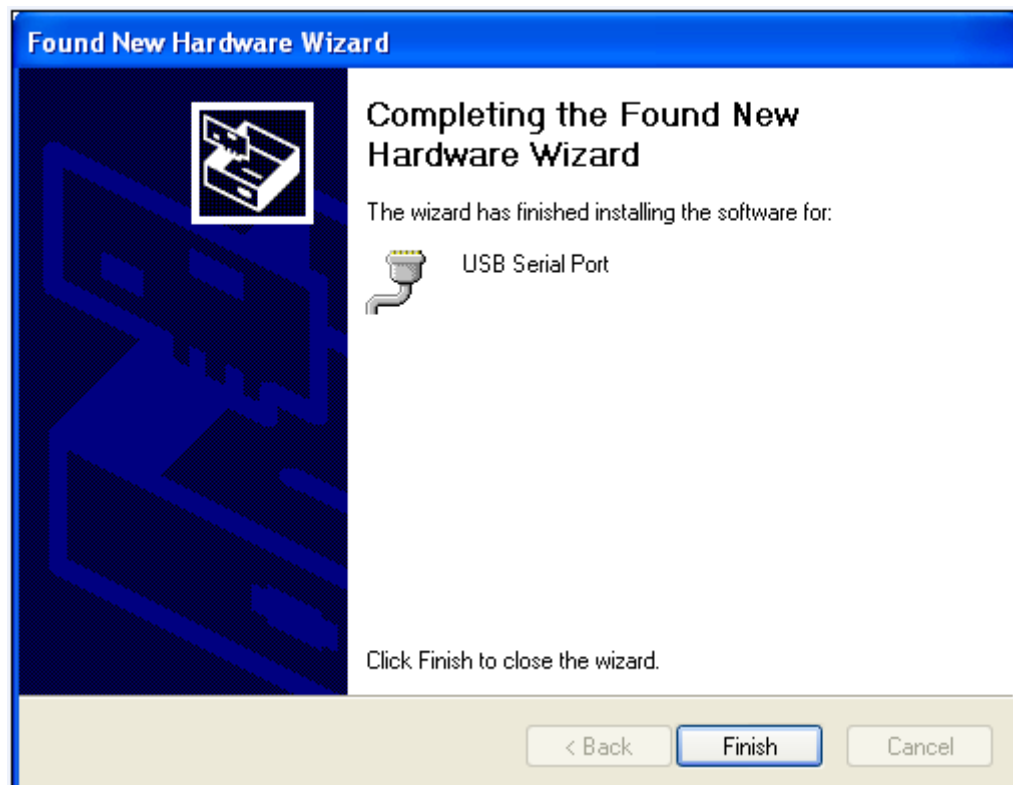
and then click  to continue.



17. Wait a few seconds till the hardware is installed.



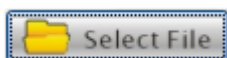
18. Click to complete the installation.



NOTE If FT232 USB UART and Serial USB driver have been installed before, you will not be prompted to install the drivers.



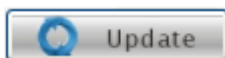
19. Double click the FOXWELL desktop icon to launch the application and then select the code reader you wish to update.



20. Use Select File to locate update file downloaded.



IMPORTANT Do NOT use files other than XXX.BIN format to update the program; otherwise your tool would get corrupted.



21. Click Update to start updating.

To update DTCs:

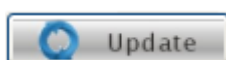
√ It may take several minutes to update the DTCs.



▶ 1. Use Select File to locate update file downloaded.



IMPORTANT Do NOT use files other than XXX.AUT format to update the DTC library; otherwise your tool would get corrupted.



2. Click Update to start updating.

NOTE For NT300, please press the UP key till a "Connecting to PC" message shows on the screen before starting update of DTCs.

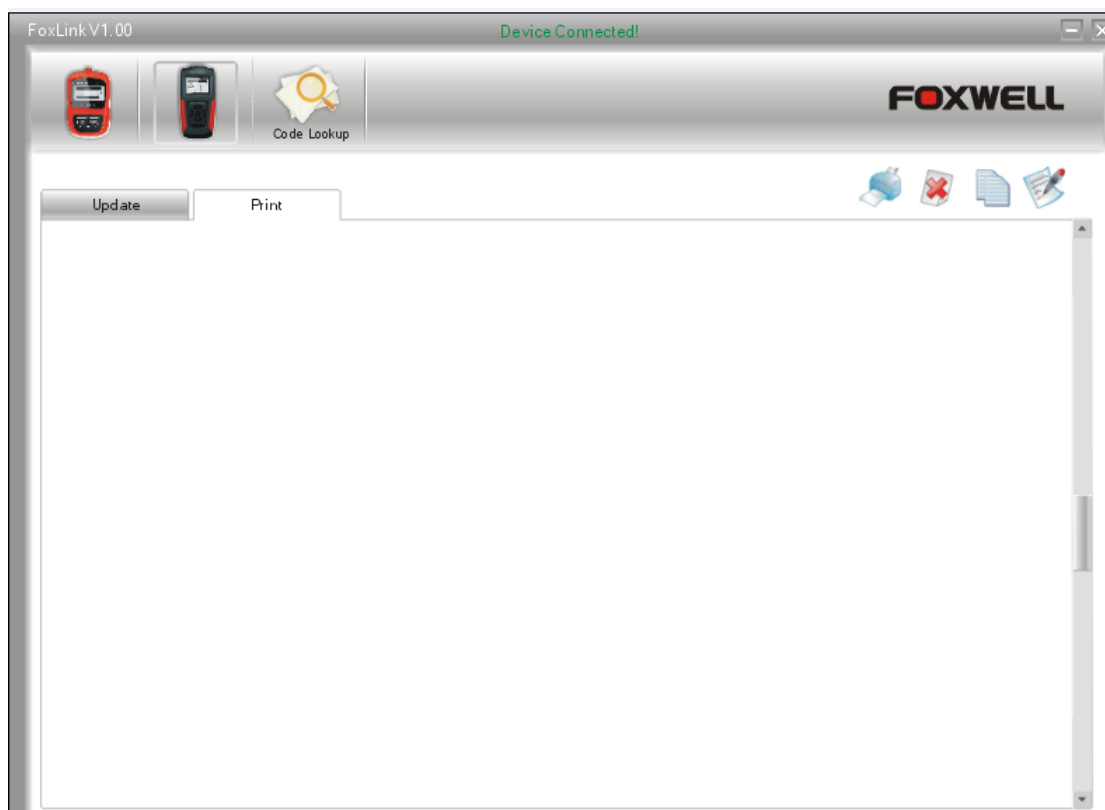
Printing

The **Print Data** function is used to print test results through computer.

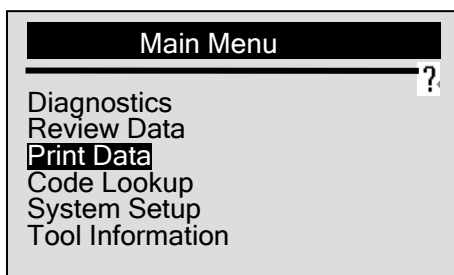
NOTE The printing function is available on NT300 only.

To print test results:

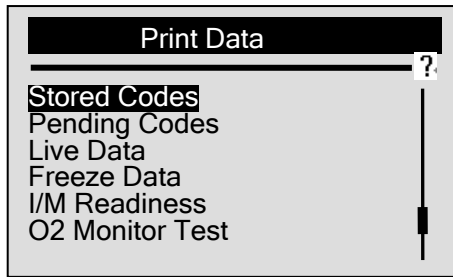
- ▶ 1.Download and launch FoxLink as instructed above.
- 2.Start the printing application by selecting NT300>Print.



- 3.Connect NT300 to computer with the USB cable supplied to power it on.
- 4.Use the **UP/DOWN** key to select **Print Data** from **Main Menu** screen.




- 5.Press the **ENTER** key to confirm.
- 6.Use the **UP/DOWN** key to select desired data to print.





√ If all recorded data to be printed, use the **UP/DOWN** key to select **Print All**.

7. Press the **ENTER** key to load data to your computer.

8. View and analyze data on your computer.

9. Click the  icon to print the data through computer.

10. If data to be cleared, use the  icon.

11. To copy the data to clipboard, use the  icon.